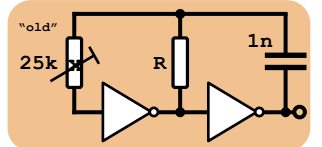
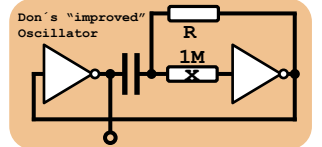
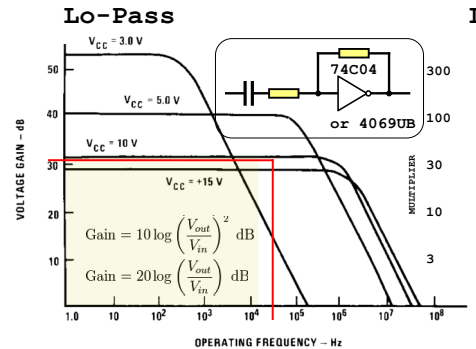


BAT -Inv corrected

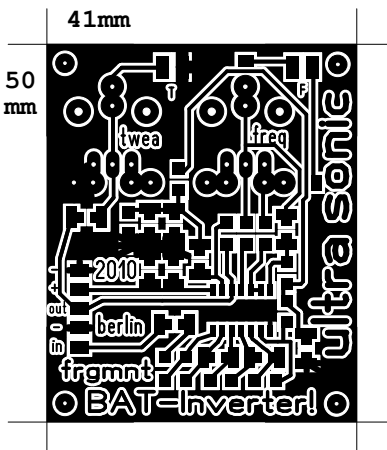
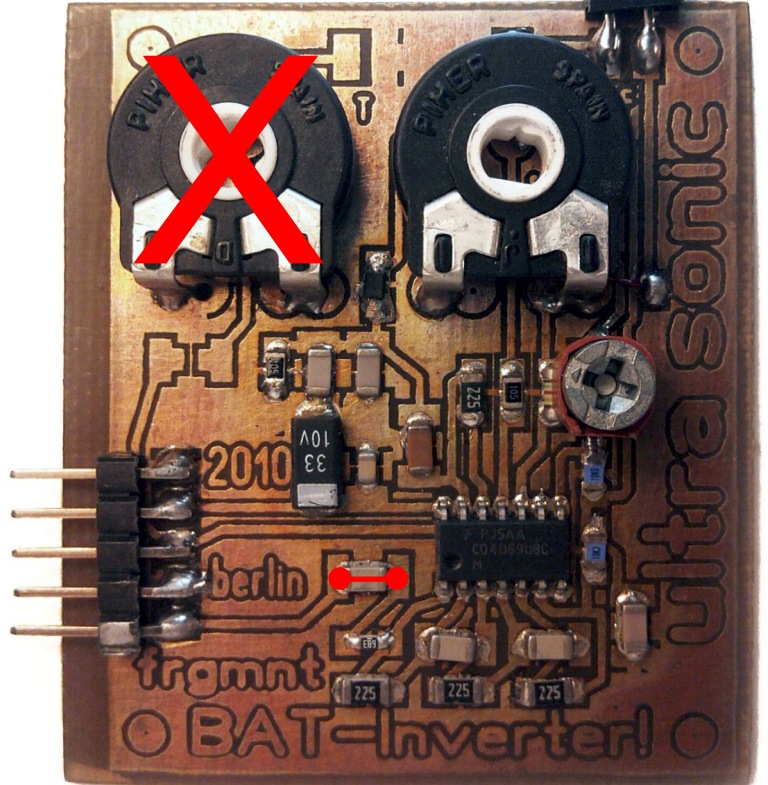
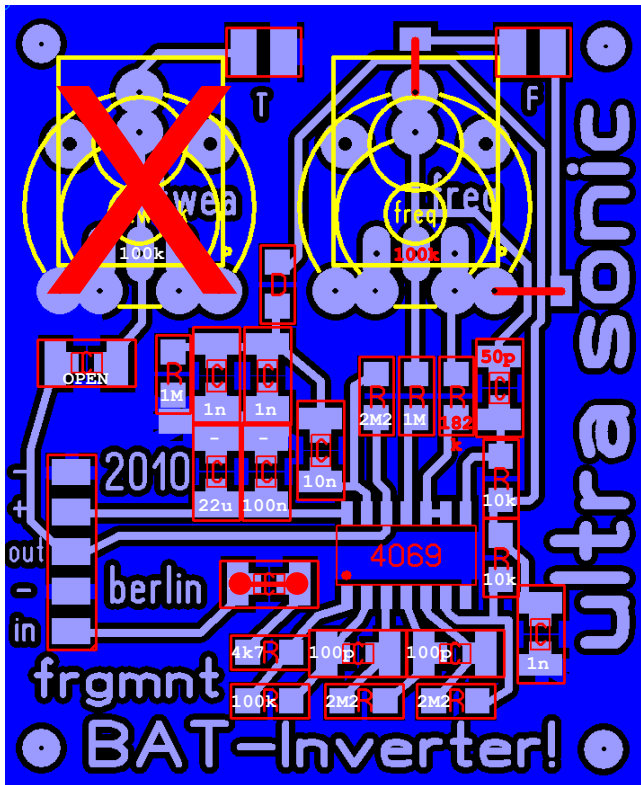


$f = 1/2,2 R \cdot C = 1/2,2 10k \cdot 1n = 45,5 \text{ kHz} \Rightarrow 41..48 \text{ kHz}$



Lo-Pass
Tweak
Option

ext LDR



- | | |
|------------------------|---------------------------------|
| 1 x 5k (50k[100k]) Pot | 1 x 1n (100p[50p]) |
| 1 x 100k lin Pot | 1 x 10n |
| | 1 x 100n |
| 1 x 9k1 (91k[182k]) | 1 x 300..600n |
| 3 x 10k | 1 x 22uF Elco |
| 1 x 4k7 | |
| 1 x 100k | 1 x 4069UB HexInverter |
| 2 x 1M | 1 x Schottky Diode |
| 3 x 2M2 | 1 x 40kHz PiezoReceiver (1,2nF) |
| | 1 x PCB single sided |
| 2 x 100p | |
| 1 x 1n | |
| 1 x 2n (= 2 x 1n) | |